

Geometry

Good morning!

Find your seat

Start on the Student information sheet

Welcome

Index cards

Pretest

Day1 - Geometry Vocabulary

Name _____
Date _____
GSE Analytic Geometry, Pd _____
Mod 0, Pre-test

1. A regular pentagon is centered about the origin and has a vertex at (5, 4).

Which transformation maps the pentagon to itself?

- a reflection across the x-axis
- a reflection across the y-axis
- a clockwise rotation of 360° about the origin
- a clockwise rotation of 144° about the origin

2. Polygon PQRST was translated 2 units down to form pentagon P'Q'R'S'T'. Pentagons PQRST and P'Q'R'S'T' are congruent.

Which statement is true about pentagons PQRST and P'Q'R'S'T'?

- The figures are not similar and not congruent.
- The figures are similar but not congruent.
- The figures are similar but not similar.
- The figures are congruent but not similar.

3. Figure ABCDEP is a dilation of figure ABCDEP by a scale factor of 2. The dilation is centered at (4, -10).

Which statement is true?

- $AB = 2A'B'$
- $AB = A'B'$
- $AB = \frac{1}{2}A'B'$
- $AB = 4A'B'$

4. In the diagram, \overline{DE} is the perpendicular bisector of \overline{AB} . The two circles prove that \overline{DE} is perpendicular to \overline{AB} .

Step	Statement	Reason
1	\overline{DE} is the perpendicular bisector of \overline{AB}	Given
2	$\overline{DA} = \overline{DB}$	Definition of perpendicular bisector
3	$\overline{DE} \perp \overline{AB}$	Definition of perpendicular bisector
4	$\angle ADE \cong \angle BDE$	Definition of perpendicular bisector
5	$\angle ADE \cong \angle BDE$	Definition of perpendicular bisector
6	$\overline{DE} \perp \overline{AB}$	Definition of perpendicular bisector

Which of the following would justify Step 6?

- AA
- SS
- HL
- ASA

Aug 1-8:49 AM

Aug 1-8:59 AM

Geometry - Unit 1 Day 1

Name _____

Undefined Terms	Description	Picture	Naming
Point	An undefined point in geometry. It's a name & location and has no size.		Capital letter, and only one letter.
Line			A cursive lower case letter or use 2 capital letters
Plane			A capital cursive letter or use 3 capital letters.
Defined Terms:			
Line Segment			2 capital letters AD or DC AS, BT, SR, TR etc
Ray			2 capital letters DE
Perpendicular Lines			Use the T symbol to indicate 90°
Parallel Lines			Use the > symbol to indicate parallel lines
Perpendicular Bisector of a segment			Use the tick mark to show the same length. (bisector)

Aug 1-9:01 AM

Circle			OP use the O symbol and one letter to indicate a circle
Angle	Where rays come together at a vertex		Name an angle use 3 letters or 1 letter. $\angle DCE, \angle ECD, \angle CDE, \angle E$
Classifying Angles:			
Acute			
Right			
Obtuse			
Straight			
Reflex	An angle which is larger than 180° but less than 360°		

Aug 1-9:02 AM

Get out 1 sheet of paper (eyeopener):

Draw 1 triangle, draw another triangle of equal size...we will finish the rest together

Explore Weebly

sign up for Remind

look at some resources on Weebly

Lets finish vocabulary

Lets start translation (p27) on the whiteboards

Learn Preimage image vector mapping rigid motion/isometry

Aug 1-9:04 AM

Get out 1 sheet of paper (eyeopener):

Draw 1 triangle, draw another triangle of equal size...we will finish the rest together

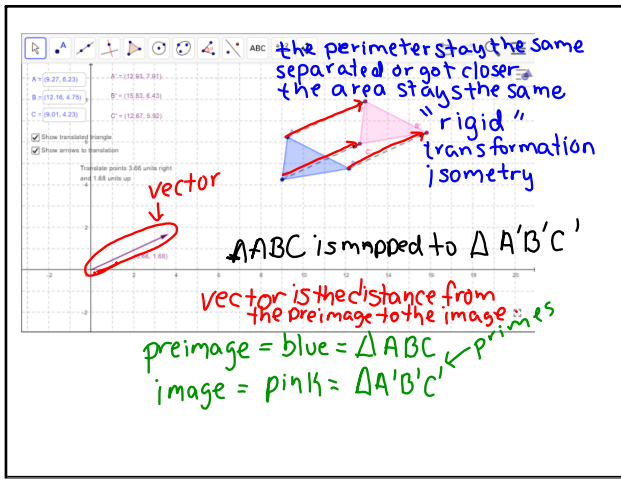
Translation on a mapping

$\triangle ABC$ maps to $\triangle XYZ$

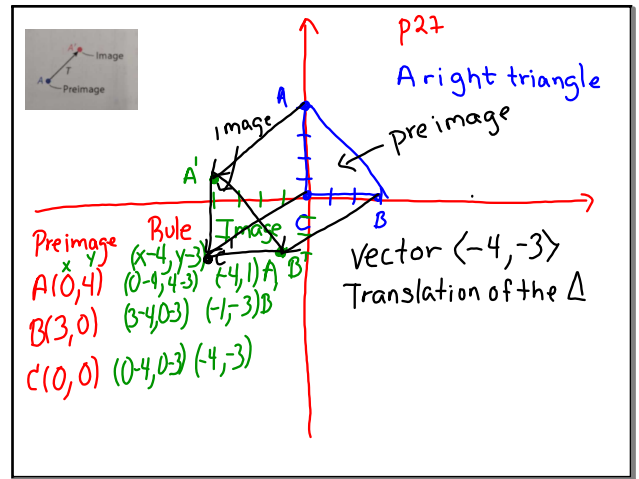
$\triangle BAC$ translates to $\triangle YXZ$

Rigid motion/isometry

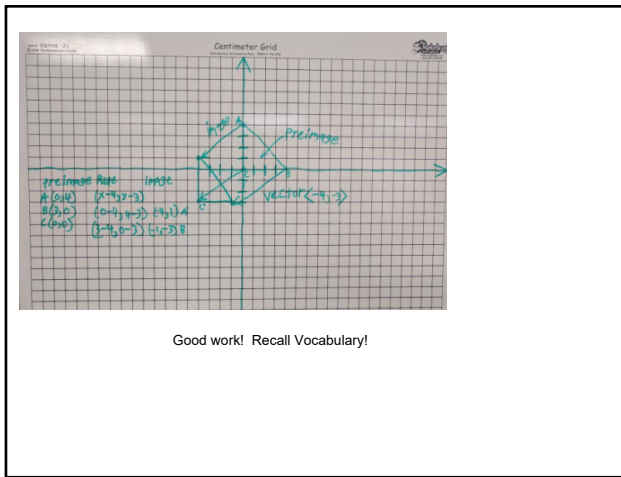
Aug 2-11:54 AM



Aug 2-12:15 PM



Aug 2-8:25 AM



Aug 2-1:55 PM

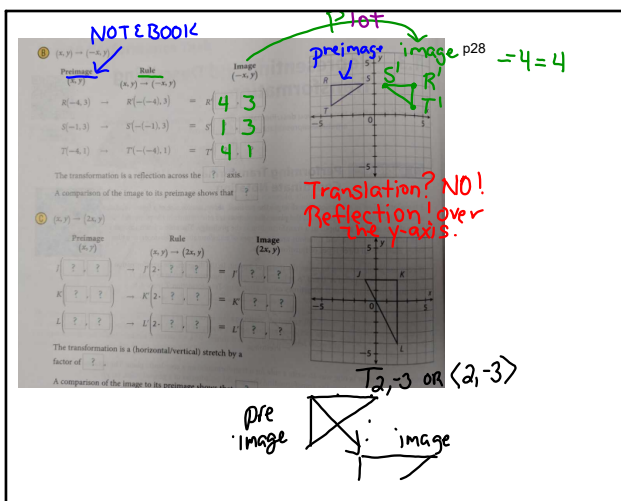
August 3, 2018

eyeopener - first student = get papers

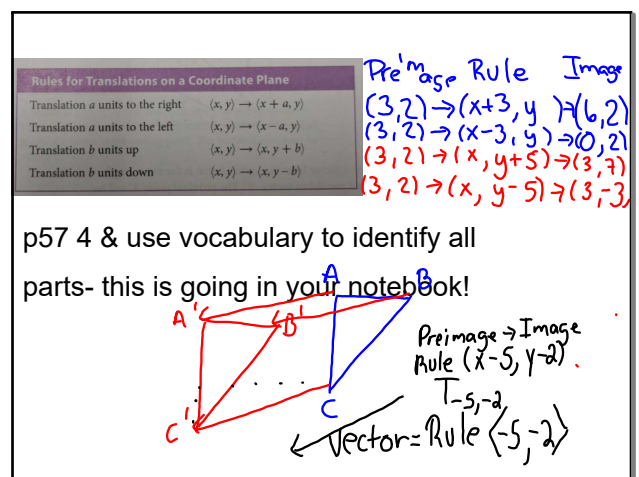
Draw a rectangle use all your translation vocabulary:
vector, preimage, image, etc

Remind??

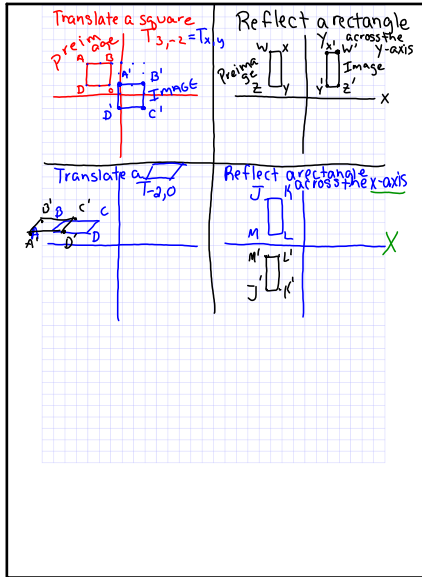
Aug 3-8:05 AM



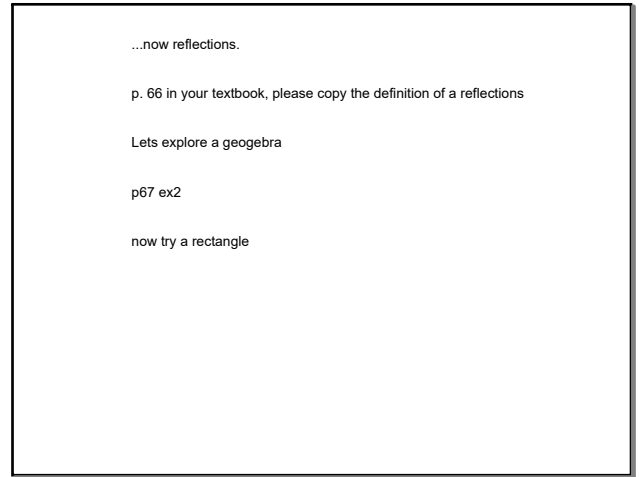
Aug 2-8:27 AM



Aug 2-8:29 AM



Aug 1-9:04 AM



Aug 3-8:11 AM